

THIS PROPERTY IS NOT LOCATED WITHIN THE 100-YEAR FLOOD PRONE AREA AS PER FLOOD INSURANCE RATE MAP NO. 1317600226

THE FIELD DATA UPON WHICH THIS PLAT IS BASED HAS A CLOSURE PRECISION OF ONE FOOT IN 23,000 FEET AND AN ANGULAR ERROR OF 4 SECONDS PER ANGLE POINT AND WAS ADJUSTED USING THE COMPASS RULE. THIS PLAT HAS BEEN CALCULATED FOR CLOSURE AND IS FOUND TO BE ACCURATE TO WITHIN ONE FOOT IN 395.835 FEET

BEARINGS SHOWN ARE BASED ON ANGLES TURNED FROM A SINGLE MAGNETIC OBSERVATION AND ARE SUBJECT TO FIELD CONDITIONS.

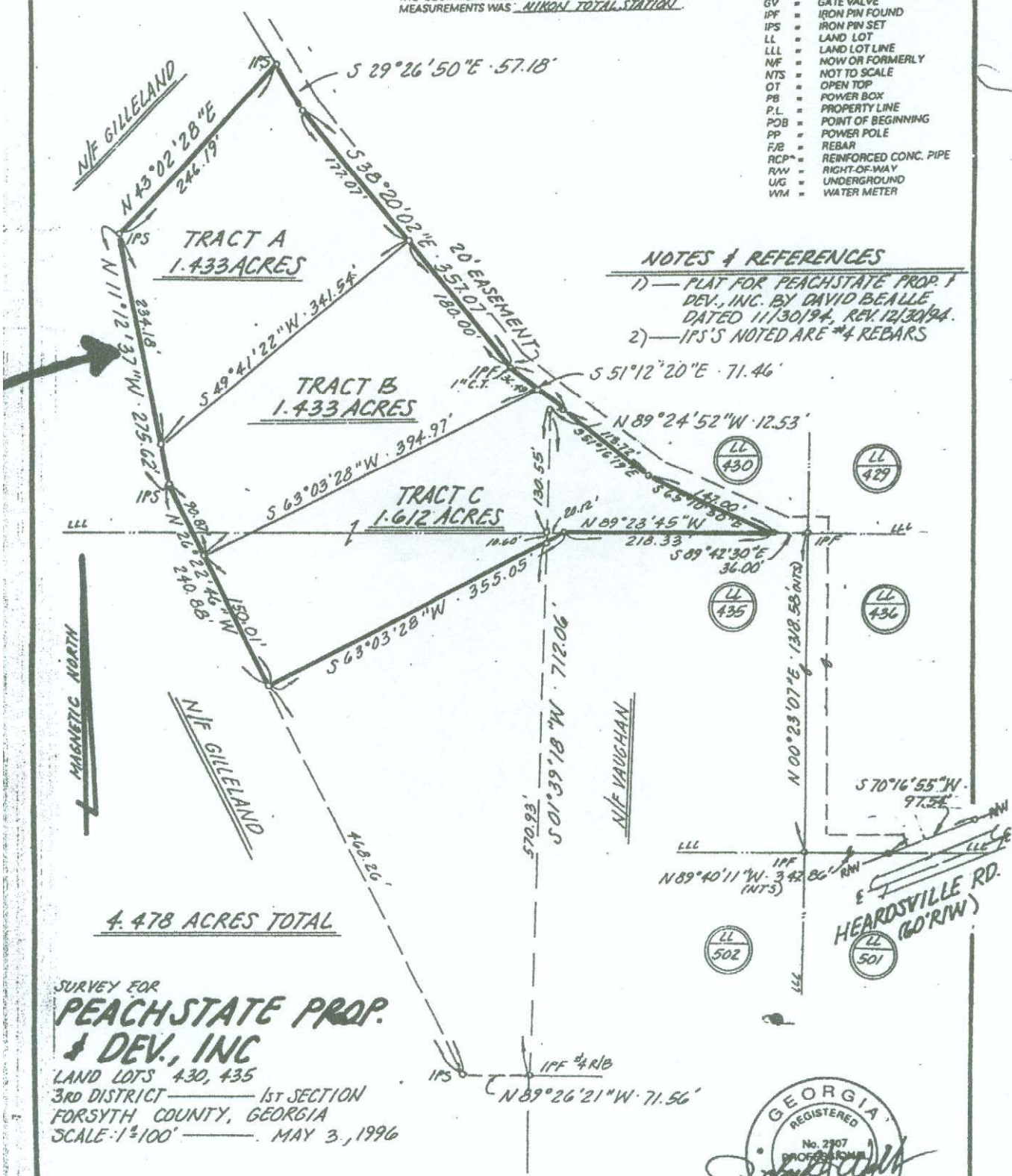
THE EQUIPMENT USED FOR ANGULAR AND DISTANCE MEASUREMENTS WAS ALKON TOTAL STATION

LEGEND

- BC = BACK OF CURB
- BSL = BUILDING SETBACK LINE
- CB = CATCH BASIN
- C.L. = CENTERLINE
- CMF = CONC. MONUMENT FOUND
- CMP = CORRUGATED METAL PIPE
- CT = CRIMP TOP
- DE = DRAINAGE EASEMENT
- EL = ELEVATION (FT)
- EOP = EDGE OF PAVEMENT
- FFEL = FINISHED FLOOR ELEVATION
- FH = FIRE HYDRANT
- GV = GATE VALVE
- IPF = IRON PIN FOUND
- IPS = IRON PIN SET
- LL = LAND LOT
- LLL = LAND LOT LINE
- NF = NOW OR FORMERLY
- NTS = NOT TO SCALE
- OT = OPEN TOP
- PB = POWER BOX
- P.L. = PROPERTY LINE
- POB = POINT OF BEGINNING
- PP = POWER POLE
- R/R = REBAR
- RCP = REINFORCED CONC. PIPE
- RAW = RIGHT-OF-WAY
- UG = UNDERGROUND
- WM = WATER METER

NOTES & REFERENCES

- 1) - PLAT FOR PEACHSTATE PROP. 1 DEV., INC. BY DAVID BEALLE DATED 11/30/94, REV. 12/30/94.
- 2) - IPS'S NOTED ARE #4 REBARS

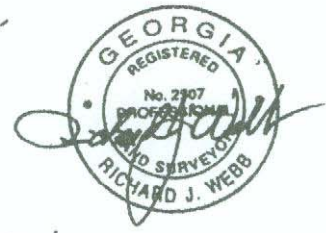


Original in S.D. Book
 Peachstate Prop. 1 - Lot 11 - 3 of 3 copies

SURVEY FOR PEACHSTATE PROP. & DEV., INC
 LAND LOTS 430, 435
 3RD DISTRICT 1ST SECTION
 FORSYTH COUNTY, GEORGIA
 SCALE: 1"=100' MAY 3, 1996



GRAPHIC SCALE
 REVISED: MAY 17, 1996 TO DIVIDE INTO TRACTS.



TECHNICAL LAND SERVICES, INC. d/b/a
RICHARD WEBB & ASSOCIATES