



**3.0 ACRES WEST FORSYTH COUNTY  
UPPER BETHELVIEW RD \* 260+ FEET FRONTAGE**

**EXCELLENT RETAIL SITE**

**7/10 MILE SOUTH OF GREEN'S CORNER**

**REZONABLE TO CBD**

**LEVEL TOPOGRAPHY**

**EASY ACCESS TO SR 400, SHOPPING & RESTAURANTS**

**MORE LAND AVAILABLE**

**PRICE: \$495,000.**

**CONTACT: DAN WOLF**

**WOLF REALTY, INC.**

**770-888-8889**

**6010 PROVIDENCE LANE, CUMMING, GEORGIA 30040  
PHONE: 770-888-8889 • EMAIL: DAN@WOLF-REALTY.COM  
WWW.WOLF-REALTY.COM**



**Legend**

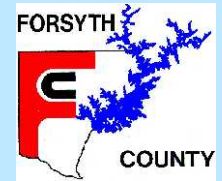
- Streets
- Parcels

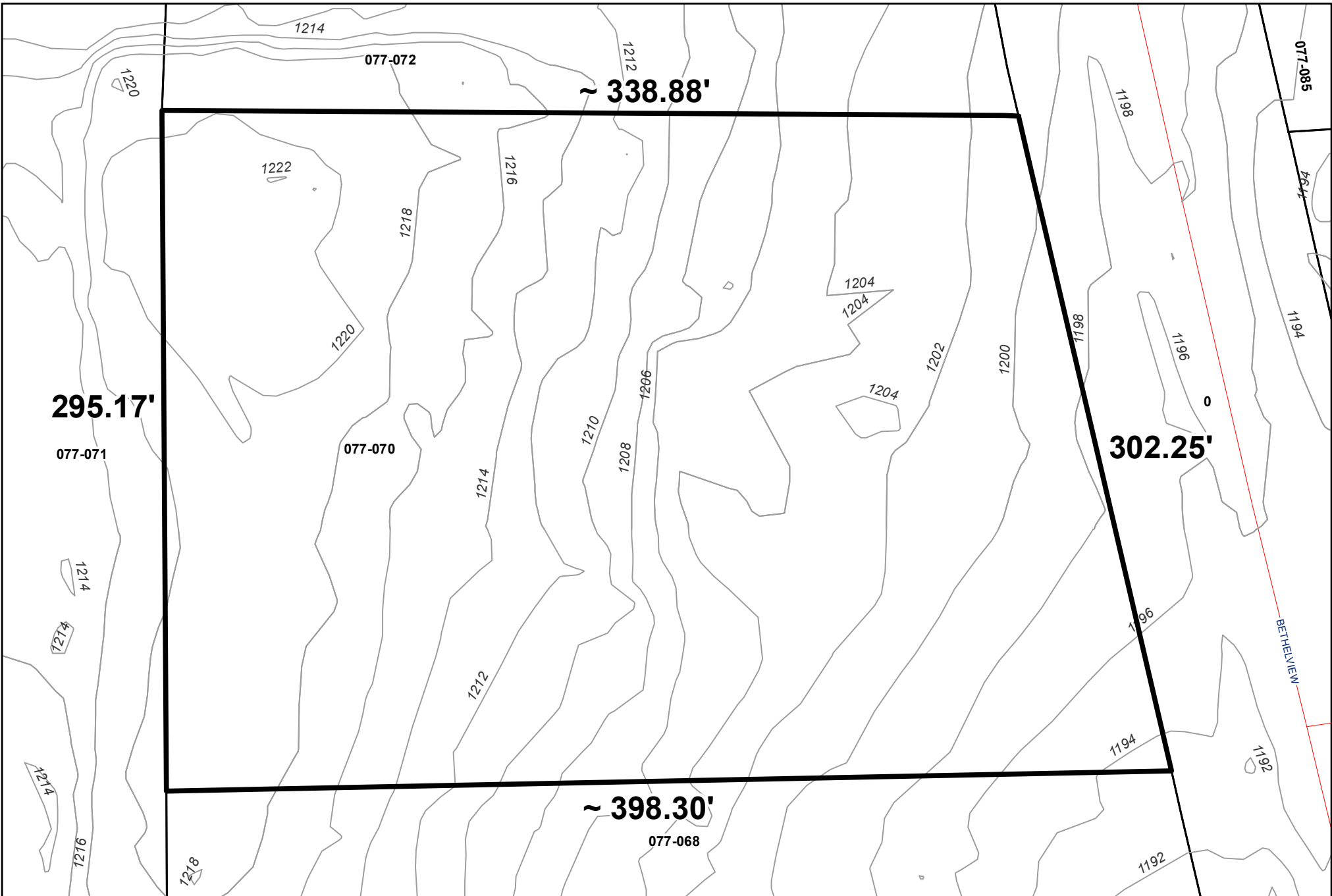
N  
  
 1 inch = 50 feet

## Forsyth County GIS Department

Produced by the Department of GIS  
 Forsyth County, Georgia  
 Major Source: County's GIS Database  
 Created in ArcGIS 10 using ArcMap  
 Coordinate System:  
 State Plane, Georgia West FIPS 1002  
 Feet, U. S. Survey  
 Projection:  
 Transverse Mercator  
 Datum:  
 North American Datum of 1983

THE INFORMATION, CONTENT AND SUBJECT MATTER INCLUDED ON THIS MAP HAS BEEN COMPILED FROM A VARIETY OF SOURCES, AND IS SUBJECT TO CHANGE WITHOUT NOTICE AS A RESULT OF UPDATES, REVISIONS, AND CORRECTIONS. FORSYTH COUNTY MAKES NO WARRANTY, REPRESENTATION OR ENDORSEMENTS, WHETHER EXPRESS OR IMPLIED, AS TO THE ACCURACY, COMPLETENESS, TIMELINESS, OR SUITABILITY TO THE USE OF SUCH INFORMATION, AND EXPRESSLY DISCLAIMS ALL SUCH WARRANTIES OF ANY KIND, INCLUDING, AND NOT LIMITED TO, IMPLIED WARRANTIES OF MERCHANTABILITY OR FITNESS FOR A PARTICULAR PURPOSE. FORSYTH COUNTY SHALL NOT BE LIABLE FOR ANY GENERAL, SPECIAL, DIRECT, INDIRECT, NOMINAL, EXEMPLARY, OR CONSEQUENTIAL DAMAGES, INCLUDING, AND NOT LIMITED TO, LOST REVENUES, LOST PROFITS, OR MONEY, OR LOSSES OF ANY KIND ARISING OR RESULTING FROM THE RELIANCE UPON, USE, MISUSE, OR INABILITY TO USE THIS MAP OR THE INFORMATION CONTAINED OR SUBJECT MATTER INCLUDED ON THIS MAP. ANY SALE OF THIS MAP OR INFORMATION CONTAINED ON THIS MAP IS EXPRESSLY PROHIBITED EXCEPT BY WRITTEN PERMISSION OF FORSYTH COUNTY.





**Legend**

- Contour 2'
- Streets
- Parcels



## Forsyth County GIS Department

Produced by the Department of GIS  
 Forsyth County, Georgia  
 Major Source: County's GIS Database  
 Created in ArcGIS 10 using ArcMap  
 Coordinate System:  
 State Plane, Georgia West FIPS 1002  
 Feet, U.S. Survey  
 Projection:  
 Transverse Mercator  
 Datum:  
 North American Datum of 1983

THE INFORMATION, CONTENT AND SUBJECT MATTER INCLUDED ON THIS MAP HAS BEEN COMPILED FROM A VARIETY OF SOURCES, AND IS SUBJECT TO CHANGE WITHOUT NOTICE AS A RESULT OF UPDATES, REVISIONS, AND CORRECTIONS. FORTSYTH COUNTY MAKES NO WARRANTY, REPRESENTATION OR ENDORSEMENTS, WHETHER EXPRESS OR IMPLIED, AS TO THE ACCURACY, COMPLETENESS, TIMELINESS, OR SUITABILITY OF SUCH INFORMATION, AND EXPRESSLY DISCLAIMS SUCH WARRANTIES OF ANY KIND, INCLUDING, AND NOT LIMITED TO, IMPLIED WARRANTIES OF MERCHANTABILITY OR FITNESS FOR A PARTICULAR PURPOSE. FORTSYTH COUNTY SHALL NOT BE LIABLE FOR ANY GENERAL, SPECIAL, DIRECT, INDIRECT, NOMINAL, EXEMPLARY, OR CONSEQUENTIAL DAMAGES, INCLUDING, AND NOT LIMITED TO, LOST REVENUES, LOST PROFITS, OR MONEY, OR ANY LOSSES OF ANY KIND ARISING OR RESULTING FROM THE RELIANCE UPON, USE, MISUSE, OR INABILITY TO USE THIS MAP OR THE INFORMATION CONTAINED THEREIN. SUBJECT MATTER INCLUDED ON THIS MAP, ANY SALE OF THIS MAP OR INFORMATION CONTAINED ON THIS MAP IS EXPRESSLY PROHIBITED EXCEPT BY WRITTEN PERMISSION OF FORTSYTH COUNTY.





PLAT FOR  
 L.C. DAY  
 LAND LOT 1023  
 3RD DIST. ~ 1ST SECTION,  
 FORSYTH COUNTY, GEORGIA  
 SCALE: 1" = 100' MAY 1973

IN MY OPINION, THIS PLAT IS A CORRECT REPRESENTATION OF THE LAND PLATED AND HAS BEEN PREPARED IN CONFORMANCE WITH THE MINIMUM STANDARDS AND REQUIREMENTS OF LAW.

*Wilson M. Price*  
 WILSON M. PRICE  
 GA. RLS #1801

