

6.10 +/- Acres Post Road

EQUIP. USED:

1. TOPCON GTS-25

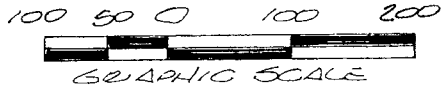
FIELD E.C.: 1/4" = 20,824'

PLAT E.C.: 1/4" = 100,000'

ADJUSTED BY COMPASS RULE.

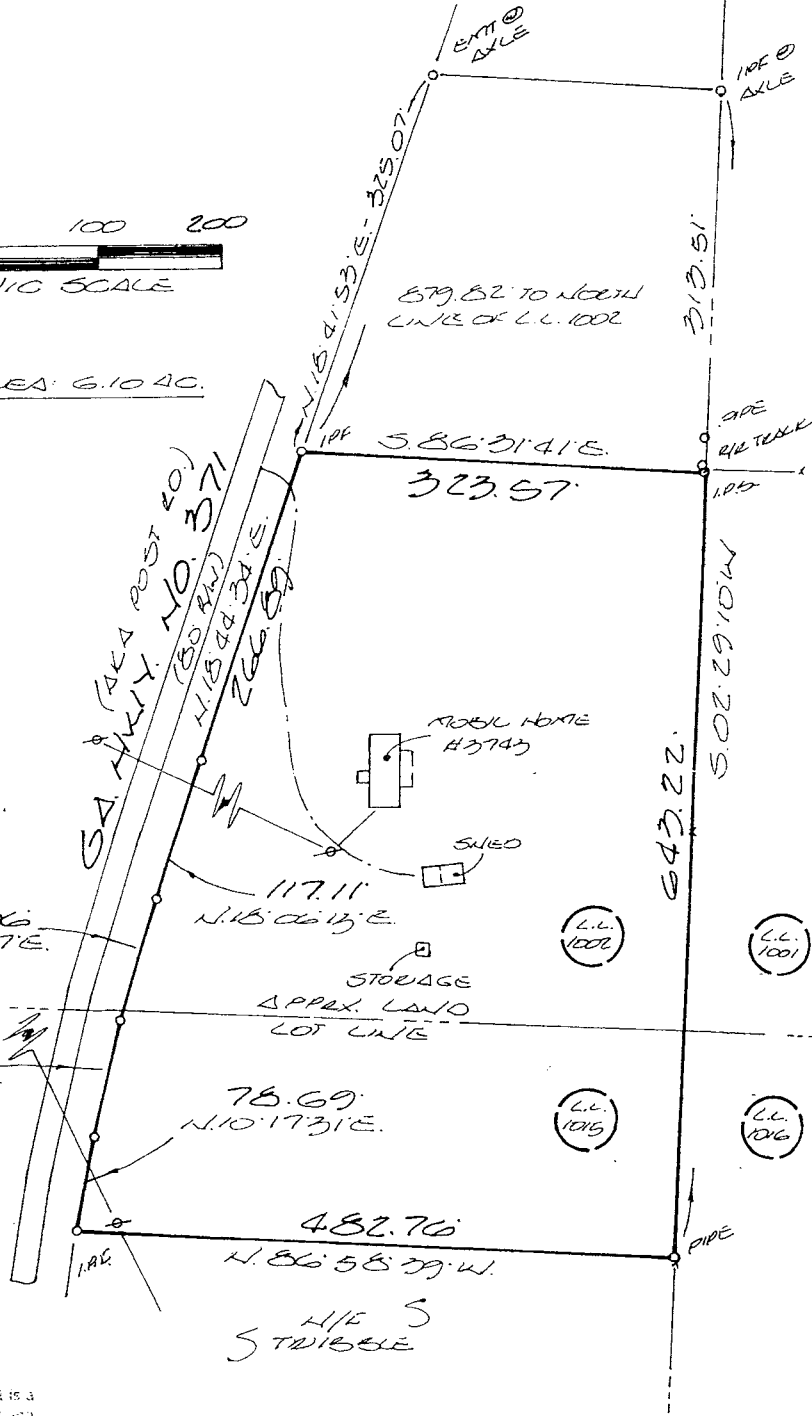
REF. PLATS:

1. P.B. 15 - P. 200
2. P.B. 16 - P. 4
3. O.B. 206 - P. 192
4. O.B. 205 - P. 772
5. O.B. 228 - P. 462



TOTAL AREA: 6.10 AC.

MAGNETIC



In my opinion, this plat is a correct representation of the land plotted and has been prepared in conformity with the requirements and requirements of law.

[Signature]

SURVEY FOR:
BETTY E. PUTT

J. A. PAGE, JR.
8810 BAY DRIVE
GALESVILLE, GA. 30506
PHONE: (404) 889-0281

LAND LOT 1002/1015 - 3RD DIST.
1ST SECTION
FORSYTH COUNTY, GEORGIA
OCT. 17, 1992 - SCALE: 1" = 100'