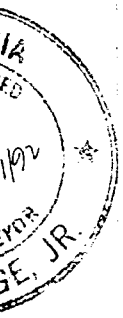
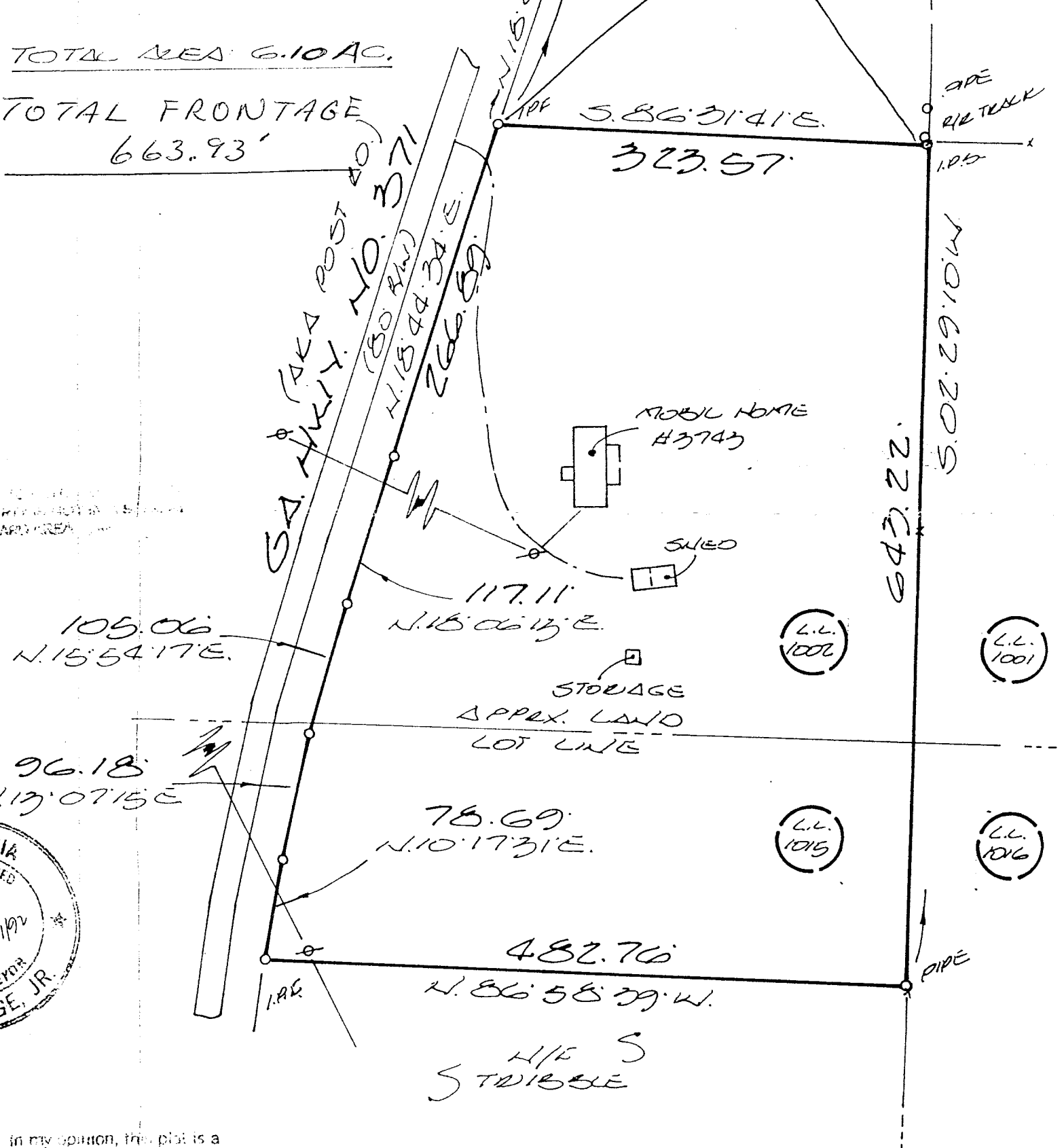


TOTAL AREA 6.10 AC.

TOTAL FRONTAGE 663.93'



In my opinion, this plat is a true and correct representation of the land platted and shown hereon in conformity with the laws and requirements of law.

[Handwritten Signature]

GE, JR.

SURVEY FOR:
 BETTY E. PUTT

6.10 +/- Acres Post Rd.

LAND LOT 1002/1015 - 3RD OF 10